

Bis-Tris Protein Gels



RUNBLUE™

RunBlue™ Bis-Tris Protein Gels have been developed by Expedeon to provide an alternative to NuPAGE® Bis-Tris gels. RunBlue™ Bis-Tris Protein Gels run with the same voltages and times, in the same tanks, using the same MES/MOPS buffers as NuPAGE® Bis-Tris gels and achieve highly comparable results with exceptional reproducibility. RunBlue™ Bis-Tris Protein Gels also benefit from the usability enhancements present in all RunBlue™ gels such as comb/strip free design and tear proof composition.



- Comparable Results to NuPAGE® Bis-Tris Gels
- Same protocols, buffers and gel tank
- More practical comb free, strip free, tear proof gels

KEY BENEFITS

- Standard Bis-Tris Buffers – Compatible with MES and MOPS buffers
- Standard format – Compatible with NuPAGE® XCell SureLock™ Mini-Cell and similar tanks
- Standard Bis-Tris Protocol – Fast run times at 200V
- Neutral running pH – Sharp bands and high protein integrity
- Unique homogeneous polymerisation – Increased consistency and no residual free acrylamide
- Extra Wells – Run up to 12 or 17 samples simultaneously
- Deep and wide wells – Load up to 35 µl (12 well) or 20 µl (17 well)
- Protruding teeth – No well contamination in case of overloading
- Resilient gel matrix – Tear-proof gel and risk-free handling
- Comb-free – Reduced risk of broken or damaged teeth
- Strip-free – No potentially ruined Western Blots
- Neutral buffer and high chemical stability – Shelf life: 1 year at 4°C and 3 months at Room Temp.

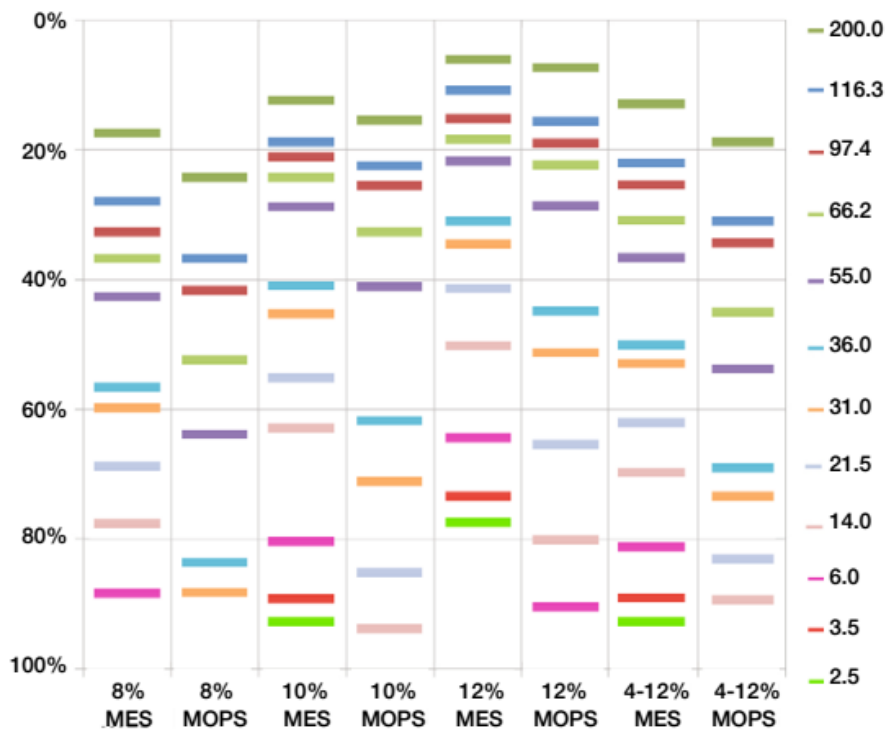
DON'T CHANGE A THING

Expedeon's new Bis-Tris Gels can be run with standard MES or MOPS buffers depending on the molecular weight range of proteins to be separated and use the same LDS sample buffer and protocols as NuPAGE® (200V). The cassettes fit in the NuPAGE® SureLock™ tank without any need for adaptors or spacers, and gels are also compatible with the iBlot® dry blotting system. There is no workflow disruption, no downtime, and no transition period.

USABILITY ENHANCEMENTS

In addition to their high resolution separation of protein all RunBlue™ Protein Gels have a number of enhancements to improve and streamline usability. RunBlue™ Protein Gels are up to 10 times stronger than conventional hand-cast gels and can stand up to repeated handling. This practically eliminates the risk of torn and unusable gels encountered during normal gel manipulation. More lanes than standard gels allows more proteins to be run and wide, deep wells allow higher volumes to be loaded.

Cassettes have no comb or tape to remove and no excess gel to trim, all of which improves the speed and efficiency of the loading and running process. Wells are outlined and numbered for quicker sample loading, and each cassette is labelled with a unique lot number for individual traceability. Well teeth protrude above the cassette to prevent sample contamination between wells in case of overloading.



DON'T COMPROMISE ON RESULTS

Expedeon have over 10 years' experience in pre-cast gel manufacture and have applied this knowledge to Bis-Tris gel chemistry. A unique manufacturing process with exacting specifications and quality controls results in increased batch to batch consistency between gels. A key element in this process is the use of physically induced gel polymerisation for consistency, as oppose to chemically induced methods which can introduce variability leading to heterogeneous polymerisation. Switching to RunBlue™ Bis-Tris gels will give better resolution while following the same migration profiles.

Code	Description				
		<i>Each box contains 10 cassettes</i>	GEL PERCENTAGE	12 WELL	17 WELL
	Bis-Tris 10 x 10 cm cassette Compatible with SureLock™ tanks		8%	NBT00812	NBT00827
			10%	NBT01012	NBT01027
			12%	NBT01212	NBT01227
			4-12% (Gradient)	NBT41212	NBT41227
NXB70500	MES Run Buffer - 20x - 500 ml				
NXB75500	MOPS Run Buffer - 20x				
NXB31010	RunBlue™ LDS Sample Buffer - 4x				

TECHNOLOGY

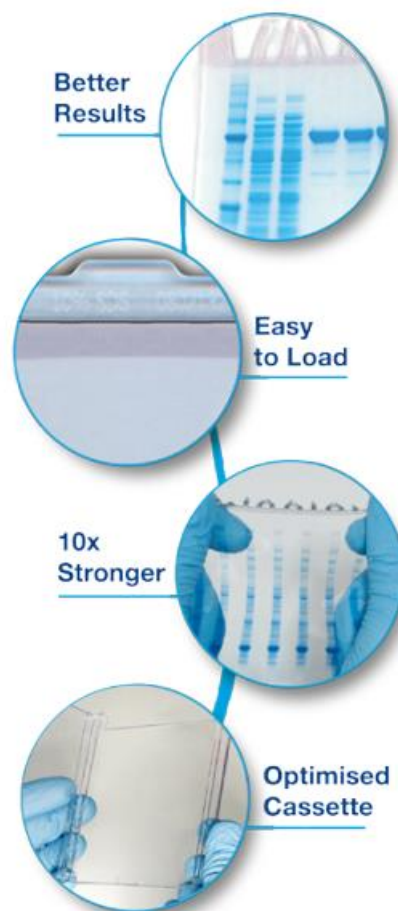
RunBlue™ Gels



RunBlue™ precast gels have been developed as an improvement on the current state of the art precast SDS-PAGE gels. RunBlue™ gels are more rigid and up to 10 times stronger than conventional precast gels, resulting in more robust gels that can be handled with confidence without tearing - an 8% gel can be thrown into the air and caught without breaking!

BENEFITS OF RUNBLUE™ PRECAST GELS

- Mass Spec compatible
- 2 Year shelf life - never throw away another gel
- Up to 10x stronger - no more torn, ruined gels
- No comb to remove - no more broken or bent teeth
- Full length resolving gel - improved resolution and better blotting
- Fast delivery with immediate and expert technical support for total peace of mind
- Best value gels available - save money!



RUNBLUE™ TECHNOLOGY

Proprietary photo-polymerisation process	- Sharper bands - Better batch to batch reproducibility
Composite Gel technology	- Stronger gels
Unique plastic cassette	- Reduced hydrophobicity -> less streaking - Enhanced oxygen barrier -> sharper bands
Unique proprietary stacking chemistry	- Better stacking -> sharper bands - Larger volume capacity
Optimised Running buffer	- Lower conductivity -> Less heat generation - Run at higher voltage -> shorter run