



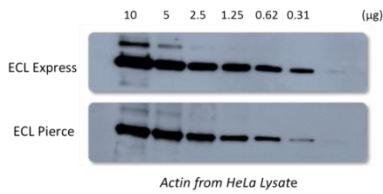
LumiBlue ECL Products

LumiBlue ECL products (Luminol/Enhancer based) cover a wide range of possible signal intensity and duration, from entry level ECL Express to the top of the line, ECL Extreme. Each product is at the top of its market segment for performance, and cost to performance ratio.

Detection Level (fg)

20000 ECL Express: (Standard Signal Intensity)

- **Better S/N ratio** than comparative products from competitors (ECL Pierce, ECL Amersham ...)
- Excellent choice for routine analysis with **a more stable working solution ... up to 5 days**
- Better signal stability – light emission
- 250mL – 2.400,- DKK; 500mL – 4.390,- DKK



1000 ECL Pico: (Medium Signal Intensity)

- **Better S/N ratio** than comparative products from competitors (Supersignal Pico Thermo, ...)
- **Excellent performance** for routine experiments
- 100 ml - 600,- DKK; 250 ml -1.090,- DKK; 500 ml - 1.650,- DKK; 1000 ml - 2.925,- DKK

500 ECL Extra: (High Signal Intensity)

- **More sensitive product** compared to competitors (ECL Plus/PS3, Luminata Crescendo ...)
- 250 ml – 1.725,- DKK; 500 ml – 2.440,- DKK

150 ECL Extended: (Very High Signal Intensity)

- **Very sensitive product** compared to competitors (ECL Prime, Supersignal Dura, Luminata Forte)
- **Extended signal** duration for prolonged exposures
- 100 ml – 1.950,- DKK; 200 ml- 2.700,- DKK

50 ECL Extreme: (Extreme Signal Intensity)

- **Most sensitive** – High end blotting compared to competitors (ECL Select, Supersignal Femto)
- 100 ml - 2.400,- DKK; 200 ml– 4.390,- DKK

